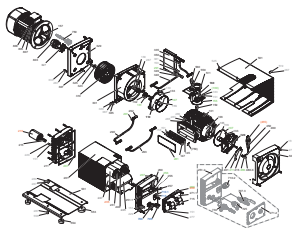


BECKER ORIGINAL PARTS

REPAIR KIT NO. 56630054500

MAKE IT BECKER



MORE DETAILS ⇨ SEE ALSO SPARE PARTS LIST

- U 5.300

| Pos. | Description | Dimensions | Quantity |
|-------|-----------------------------|------------------|----------|
| 105 | ROTOR VANE KIT | - | 1 |
| 107 | O-RING | 151 x 2 mm | 2 |
| 113 | SLIDE BEARING | - | 2 |
| 131 | SHAFT SEALING RING | - | 1 |
| 155 | O-RING | 102 x 3 mm | 1 |
| 169 | O-RING | 77 x 3,5 mm | 1 |
| 207 | GASKET | - | 2 |
| 219 | OIL FILTER | 68 x 85 mm | 1 |
| 235 | OIL SEPARATING ELEMENT | 100 x 257 mm | 2 |
| 245 | COARSE SEPARATOR | - | 1 |
| 247 | FILTER STRAINER | - | 1 |
| 256 | O-RING | 4,5 x 1,8 mm | 1 |
| 269 | GASKET | - | 1 |
| 281 | O-RING | 164,5 x 3 mm | 1 |
| 291 | FLAT SEALING RING | 12 x 18 x 1,5 mm | 16 |
| 327 | COUPLING DISC | - | 1 |
| 411 | FLAT SEALING RING | A6 x 10 x 1 mm | 2 |
| 455 | FILTER CARTRIDGE | - | 1 |
| 469 | FLAT SEALING RING | A10 x 16 x 1 mm | 2 |
| 700 | OIL SIGHT GLASS WITH GASKET | G 1 | 1 |
| 705 | SCREW PLUG | G ½ | 1 |
| 710.1 | SCREW CAP | G ¾ | 1 |
| 713 | STICKER | G ½ | 1 |



WWW.BECKER-INTERNATIONAL.COM
WWW.BECKER-INTERNATIONAL-SHOP.COM

